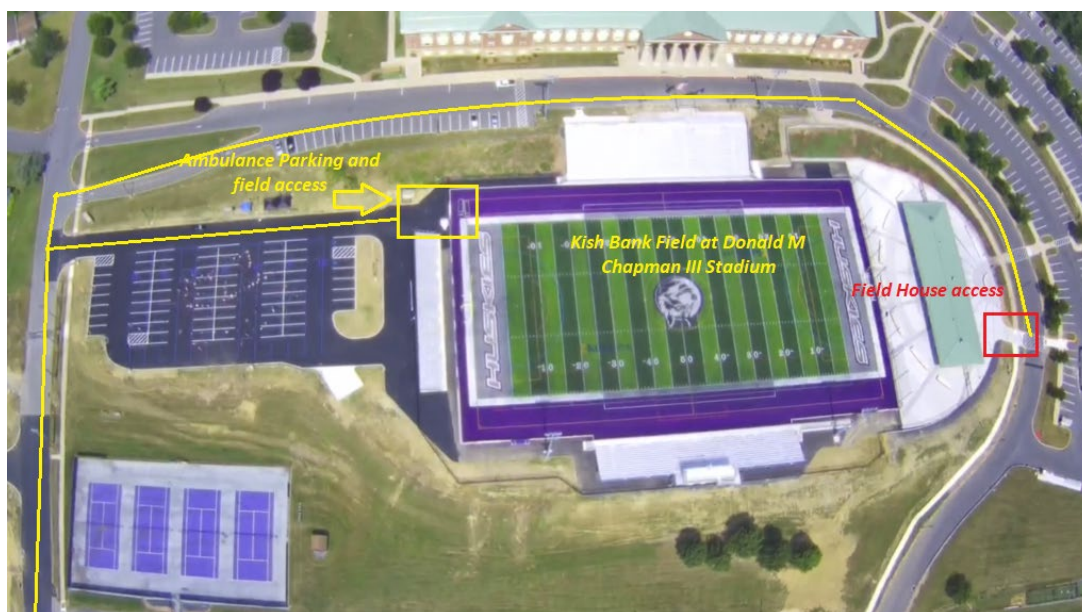


Kish Bank Field at Donald M. Chapman III Stadium Emergency

Action Plan

In the event of an emergency, follow the steps bellow:

1. Immediate care of the injured or ill athletes(s)
2. Activation of EMS for any life-threatening conditions (loss of consciousness, no breathing, no pulse, severe bleeding, head/neck injury.)
 - a. Call 911 and provide necessary information (name, location of injured athlete, telephone number where call is placed, number of individuals injured, condition of injured athlete(s), treatment already given, specific directions to the venue, any other information requested.
 - i. **EMS access for field access: Follow 6th Street, turn right into the parking lot and proceed straight ahead to the game field and gate.**
 - ii. **EMS access for Geisinger Field House: Follow 6th Street, turn right as if going to the high school. Proceed in front of the HS and around to the entrance of the field house**
 - b. If ambulance is on the scene, the AT will signal the EMT/Paramedics onto the field
 - c. If any gate(s) need to be open the Crowd Management Team will open them to create a transportation route to and from the venue.
 - d. A member of the coaching staff or parent is responsible to escort the injured athlete to hospital in the ambulance.
 - e. Use cell phones. Land lines are located in the main office at MCHS and MCJHS
3. Emergency Equipment Retrieval
 - a. If emergency equipment is needed the AT will signal to the sideline for additional support.
4. AEDs are mounted on the exterior of the field house, located in the MCHS Main Entrance, located outside the MCJHS Gym, and with the athletic trainer
5. Lightning Shelter: Geisinger Field House
6. Important Phone Numbers: EMS: 911; FAME EMS: 717-248-5553; MCRPD: 717-248-1400; MCHS Office: 717-242-0240; MCJHS Office: 717-248-5441



Marcal Paper Field Emergency Action Plan

In the event of an emergency, follow the steps below:

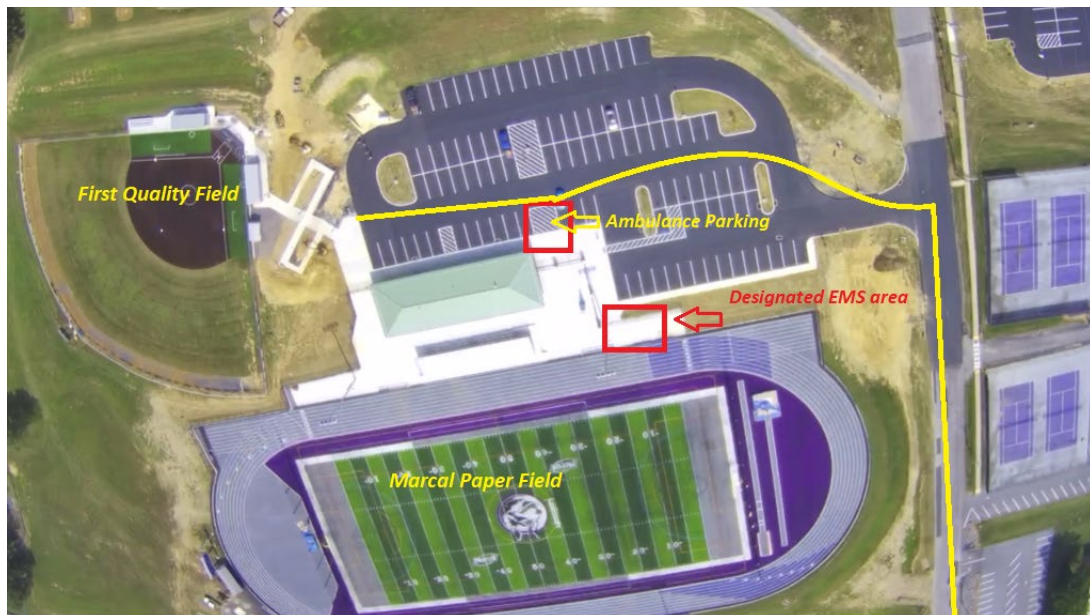
1. Immediate care of the injured or ill athletes(s)
2. Activation of EMS for any life-threatening conditions (loss of consciousness, no breathing, no pulse, severe bleeding, head/neck injury.)
 - a. Call 911 and provide necessary information (name, location of injured athlete, telephone number where call is placed, number of individuals injured, condition of injured athlete(s), treatment already given, specific directions to the venue, any other information requested.
 - i. **EMS access: Drive up 6th St. Turn left across from the tennis courts. Ambulance can park right in front of the main gate.**
 - b. If ambulance is on the scene, the AT will signal the EMT/Paramedics onto the field
 - c. A member of the coaching staff or parent is responsible to escort the injured athlete to hospital in the ambulance.
 - d. Use cell phones. Land lines are located in the main office at MCJHS
3. Emergency Equipment Retrieval
 - a. If emergency equipment is needed the AT will signal to the sideline for additional support.
4. AEDs are mounted on the exterior of the field house and are with the athletic trainer
5. Important Phone Numbers: EMS: 911; FAME EMS: 717-248-5553; MCRPD: 717-248-1400; MCJHS Office: 717-248-5441
6. Lightning Shelter: Fleet Reps Field House



First Quality Field Emergency Action Plan

In the event of an emergency, follow the steps below:

1. Immediate care of the injured or ill athletes(s)
2. Activation of EMS for any life-threatening conditions (loss of consciousness, no breathing, no pulse, severe bleeding, head/neck injury.)
 - a. Call 911 and provide necessary information (name, location of injured athlete, telephone number where call is placed, number of individuals injured, condition of injured athlete(s), treatment already given, specific directions to the venue, any other information requested).
 - i. **EMS access is off of 6th Street across from the tennis courts as if going to Marcal Paper Field. Proceed to the end of the parking lot to the stairs/ramp.**
 - b. If ambulance is on the scene, the AT will signal the EMT/Paramedics onto the field
 - c. If any gate(s) need to be open the Crowd Management Team will open them to create a transportation route to and from the venue.
 - d. A member of the coaching staff or parent is responsible to escort the injured athlete to hospital in the ambulance.
 - e. Use cell phones. Land lines are located in the main office at MCHS and MCJHS
3. Emergency Equipment Retrieval
 - a. If emergency equipment is needed the AT will signal to the sideline for additional support.
4. AEDs are mounted on the Field House, located in the MCHS Main Entrance, located outside the MCJHS Gym, and with the athletic trainer
5. Lightning Shelter: Fleet Reps Field House
6. Important Phone Numbers: EMS: 911; FAME EMS: 717-248-5553; MCRPD: 717-248-1400; MCHS Office: 717-242-0240; MCJHS Office: 717-248-5441



Capouillez Field Emergency Action Plan

In the event of an emergency, follow the steps below:

1. Immediate care of the injured or ill athletes(s)
2. Activation of EMS for any life-threatening conditions (loss of consciousness, no breathing, no pulse, severe bleeding, head/neck injury.)
 - a. Call 911 and provide necessary information (name, location of injured athlete, telephone number where call is placed, number of individuals injured, condition of injured athlete(s), treatment already given, specific directions to the venue, any other information requested.)
 - i. **EMS access is off 8th St at Open Hearth Manor (by the dugouts)**
 - b. If ambulance is on the scene, the AT will signal the EMT/Paramedics onto the field
 - c. If any gate(s) need to be open the Crowd Management Team will open them to create a transportation route to and from the venue.
 - d. A member of the coaching staff or parent is responsible to escort the injured athlete to hospital in the ambulance.
 - e. Use cell phones. Land lines are located in the main office at MCHS and MCJHS
3. Emergency Equipment Retrieval
 - a. If emergency equipment is needed the AT will signal to the sideline for additional support.
4. AEDs are mounted on Geisinger Field House and located in the MCHS Main Entrance, outside the MCJHS Gym, and with the athletic trainer
5. Lightning Shelter: Geisinger Field House
6. Important Phone Numbers: EMS: 911; FAME EMS: 717-248-5553; MCRPD: 717-248-1400; MCHS Office: 717-242-0240; MCJHS Office: 717-248-5441



Mifflin County High School Athletic Training Room Emergency

Action Plan

In the event of an emergency, follow the steps bellow:

1. Immediate care of the injured or ill athletes(s)
2. Activation of EMS for any life-threatening conditions (loss of consciousness, no breathing, no pulse, severe bleeding, head/neck injury.)
 - a. Call 911 and provide necessary information (name, location of injured athlete, telephone number where call is placed, number of individuals injured, condition of injured athlete(s), treatment already given, specific directions to the venue, any other information requested.
 - i. **EMS access: Drive to the top of 6th St. Turn right into the parking lot. Drive up the concrete walkway between the buildings to Door 24.**
 - ii. **MCHS Address: 501 6th St. Lewistown, PA 17044**
 - b. A member of the coaching staff or parent is responsible to escort the injured athlete to hospital in the ambulance.
 - c. Use cell phones. Land lines are located in the athletic training room and in the main office at MCHS.
3. Emergency Equipment Retrieval
 - a. If emergency equipment is needed the AT will signal to the sideline for additional support.
4. AEDs are located in the MCHS Commons, by the water fountains between the main and auxiliary gyms, and in the athletic training room.
5. Important phone numbers: EMS: 911; FAME EMS: 717-248-5553;
MCRPD: 717-248-1400; MCHS Office: 717-242-0240



Mifflin County High School Auxiliary Gym Emergency Action Plan

In the event of an emergency, follow the steps bellow:

1. Immediate care of the injured or ill athletes(s)
2. Activation of EMS for any life-threatening conditions (loss of consciousness, no breathing, no pulse, severe bleeding, head/neck injury.)
 - a. Call 911 and provide necessary information (name, location of injured athlete, telephone number where call is placed, number of individuals injured, condition of injured athlete(s), treatment already given, specific directions to the venue, any other information requested.
 - i. **EMS access: Drive to the top of 6th St. Turn right into the parking lot. Drive up the concrete walkway between the buildings to Door 24.**
 - ii. **MCHS Address: 501 6th St. Lewistown, PA 17044**
 - b. A member of the coaching staff or parent is responsible to escort the injured athlete to hospital in the ambulance.
 - c. Use cell phones. Land lines are located in the auxiliary gym and in main office at MCHS.
3. Emergency Equipment Retrieval
 - a. If emergency equipment is needed the AT will signal to the sideline for additional support.
4. AEDs are located in the MCHS Commons, by the water fountains between the main and auxiliary gyms, and in the athletic training room.
5. Important phone numbers: EMS: 911; FAME EMS: 717-248-5553;
MCRPD: 717-248-1400; MCHS Office: 717-242-0240



Mifflin County High School Main Gym Emergency Action Plan

In the event of an emergency, follow the steps below:

1. Immediate care of the injured or ill athlete(s)
2. Activation of EMS for any life-threatening conditions (loss of consciousness, no breathing, no pulse, severe bleeding, head/neck injury.)
 - a. Call 911 and provide necessary information (name, location of injured athlete, telephone number where call is placed, number of individuals injured, condition of injured athlete(s), treatment already given, specific directions to the venue, any other information requested.)
 - i. **EMS access: Drive to the top of 6th St. Turn right into the parking lot. Drive up the concrete walkway between the buildings to Door 24.**
 - ii. **MCHS Address: 501 6th St. Lewistown, PA 17044**
 - b. A member of the coaching staff or parent is responsible to escort the injured athlete to hospital in the ambulance.
 - c. Use cell phones. Land lines are located in the main office at MCHS.
3. Emergency Equipment Retrieval
 - a. If emergency equipment is needed the AT will signal to the sideline for additional support.
4. AEDs are located in the MCHS Commons, by the water fountains between the main and auxiliary gyms, and in the athletic training room.
5. Important phone numbers: EMS: 911; FAME EMS: 717-248-5553;
MCRPD: 717-248-1400; MCHS Office: 717-242-0240



Mifflin County High School Wrestling Room Emergency Action

Plan

In the event of an emergency, follow the steps bellow:

1. Immediate care of the injured or ill athletes(s)
2. Activation of EMS for any life-threatening conditions (loss of consciousness, no breathing, no pulse, severe bleeding, head/neck injury.)
 - a. Call 911 and provide necessary information (name, location of injured athlete, telephone number where call is placed, number of individuals injured, condition of injured athlete(s), treatment already given, specific directions to the venue, any other information requested.
 - i. **EMS access: Drive to the top of 6th St. Turn right into the parking lot. Drive up the concrete walkway between the buildings to Door 24.**
 - ii. **MCHS Address: 501 6th St. Lewistown, PA 17044**
 - b. A member of the coaching staff or parent is responsible to escort the injured athlete to hospital in the ambulance.
 - c. Use cell phones. Land lines are located in the main office at MCHS.
3. Emergency Equipment Retrieval
 - a. If emergency equipment is needed the AT will signal to the sideline for additional support.
4. AEDs are located in the MCHS Commons, by the water fountains between the main and auxiliary gyms, and in the athletic training room.
5. Important phone numbers: EMS: 911; FAME EMS: 717-248-5553;
MCRPD: 717-248-1400; MCHS Office: 717-242-0240

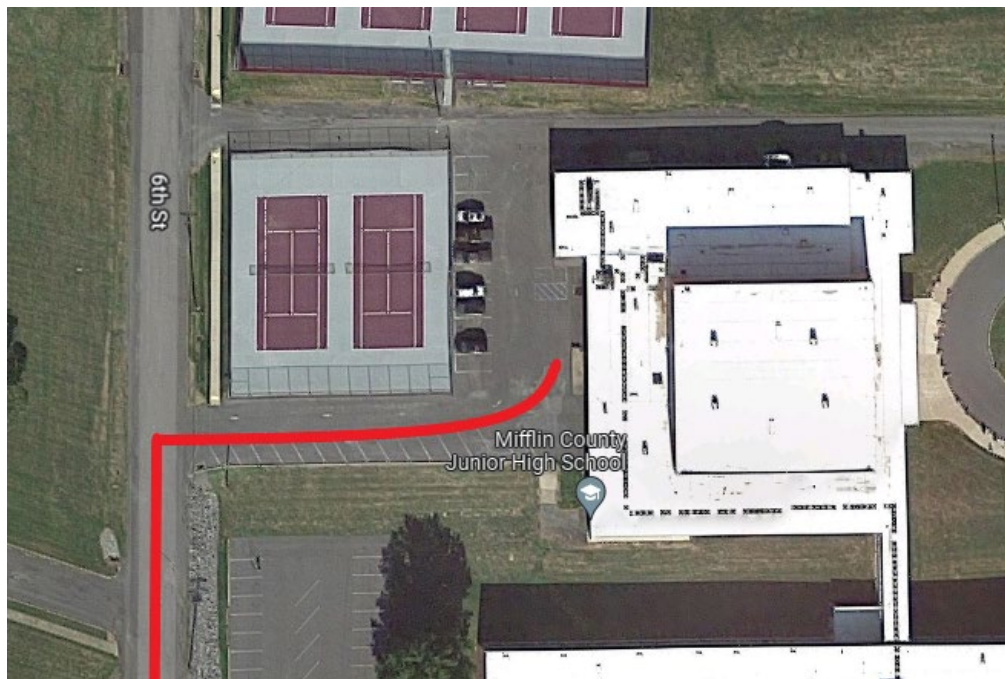


Mifflin County Junior High School Athletic Training Room

Emergency Action Plan

In the event of an emergency, follow the steps bellow:

1. Immediate care of the injured or ill athletes(s)
2. Activation of EMS for any life-threatening conditions (loss of consciousness, no breathing, no pulse, severe bleeding, head/neck injury.)
 - a. Call 911 and provide necessary information (name, location of injured athlete, telephone number where call is placed, number of individuals injured, condition of injured athlete(s), treatment already given, specific directions to the venue, any other information requested.
 - i. **EMS access: Follow Kishacoquillas St to Manor St and turn left.**
 - ii. **School Address: 2 Manor Dr. Lewistown, PA 17044**
 - b. If ambulance is on the scene, the AT will signal the EMT/Paramedics onto the field
 - c. A member of the coaching staff or parent is responsible to escort the injured athlete to hospital in the ambulance.
 - d. Use cell phones. Land lines are located in the main office at MCJHS
3. Emergency Equipment Retrieval
 - a. If emergency equipment is needed the AT will signal to the sideline for additional support.
4. AEDs are located outside the gym by the girls locker room entrance.
5. Important Phone Numbers: EMS: 911; FAME EMS: 717-248-5553; MCRPD: 717-248-1400; MCJHS Office: 717-248-5441

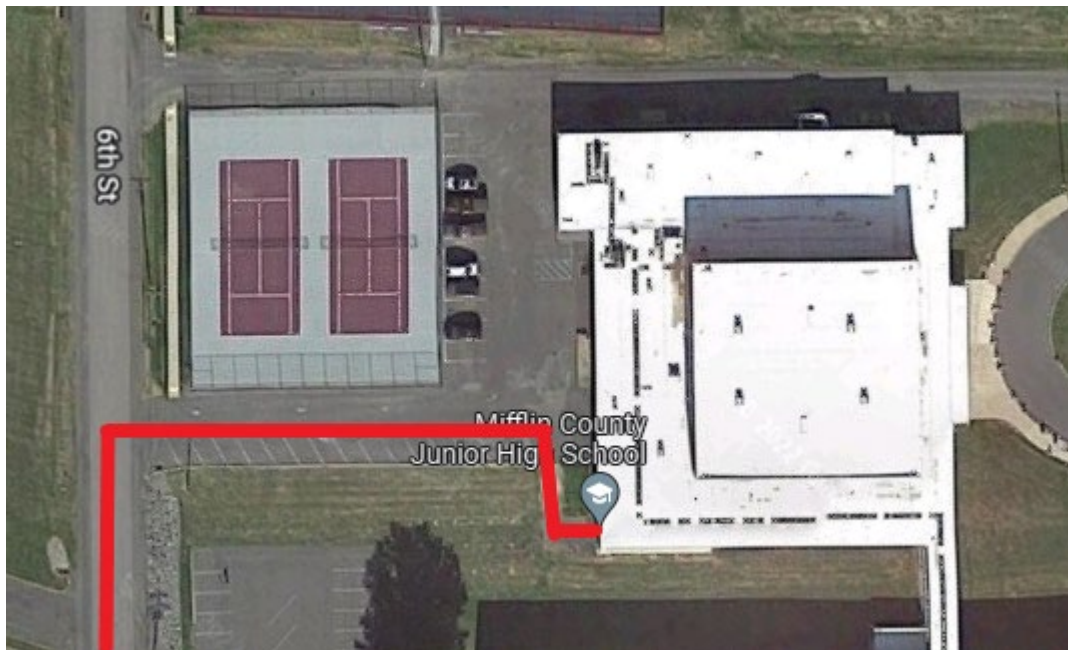


Mifflin County Junior High School Auxiliary Gym Emergency

Action Plan

In the event of an emergency, follow the steps bellow:

1. Immediate care of the injured or ill athletes(s)
2. Activation of EMS for any life-threatening conditions (loss of consciousness, no breathing, no pulse, severe bleeding, head/neck injury.)
 - a. Call 911 and provide necessary information (name, location of injured athlete, telephone number where call is placed, number of individuals injured, condition of injured athlete(s), treatment already given, specific directions to the venue, any other information requested.
 - i. **EMS access: Drive up 6th St. Turn into parking lot by the tennis courts. Auxiliary gym entrance is at the bottom of the stairs**
 - ii. **School Address: 700 Cedar St Lewistown, PA 17044**
 - b. If ambulance is on the scene, the AT will signal the EMT/Paramedics onto the field
 - c. A member of the coaching staff or parent is responsible to escort the injured athlete to hospital in the ambulance.
 - d. Use cell phones. Land lines are located in the main office at MCJHS
3. Emergency Equipment Retrieval
 - a. If emergency equipment is needed the AT will signal to the sideline for additional support.
4. AEDs are located outside the gym by the girls locker room entrance.
5. Important Phone Numbers: EMS: 911; FAME EMS: 717-248-5553; MCRPD: 717-248-1400; MCJHS Office: 717-248-5441



Mifflin County Junior High School Main Gym Emergency Action Plan

In the event of an emergency, follow the steps bellow:

1. Immediate care of the injured or ill athletes(s)
2. Activation of EMS for any life-threatening conditions (loss of consciousness, no breathing, no pulse, severe bleeding, head/neck injury.)
 - a. Call 911 and provide necessary information (name, location of injured athlete, telephone number where call is placed, number of individuals injured, condition of injured athlete(s), treatment already given, specific directions to the venue, any other information requested.
 - i. **EMS access: Drive up Cedar St. Turn left into the second parking lot. Gym is located inside glass doors.**
 - ii. **School Address: 700 Cedar St Lewistown, PA 17044**
 - b. If ambulance is on the scene, the AT will signal the EMT/Paramedics onto the field
 - c. A member of the coaching staff or parent is responsible to escort the injured athlete to hospital in the ambulance.
 - d. Use cell phones. Land lines are located in the main office at MCJHS
3. Emergency Equipment Retrieval
 - a. If emergency equipment is needed the AT will signal to the sideline for additional support.
4. AEDs are located outside the gym by the girls locker room entrance.
5. Important Phone Numbers: EMS: 911; FAME EMS: 717-248-5553; MCRPD: 717-248-1400; MCJHS Office: 717-248-5441

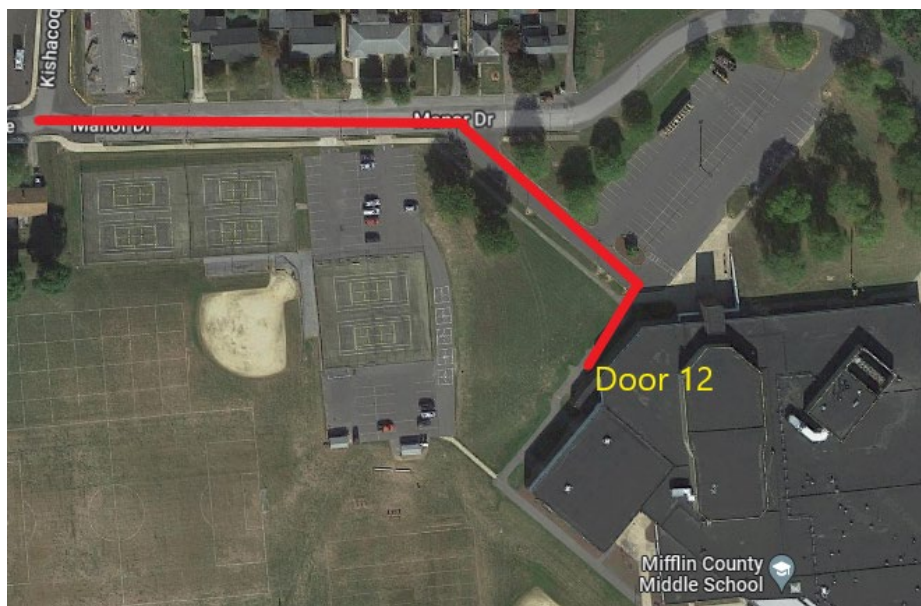


Mifflin County Middle School Athletic Training Room

Emergency Action Plan

In the event of an emergency, follow the steps below:

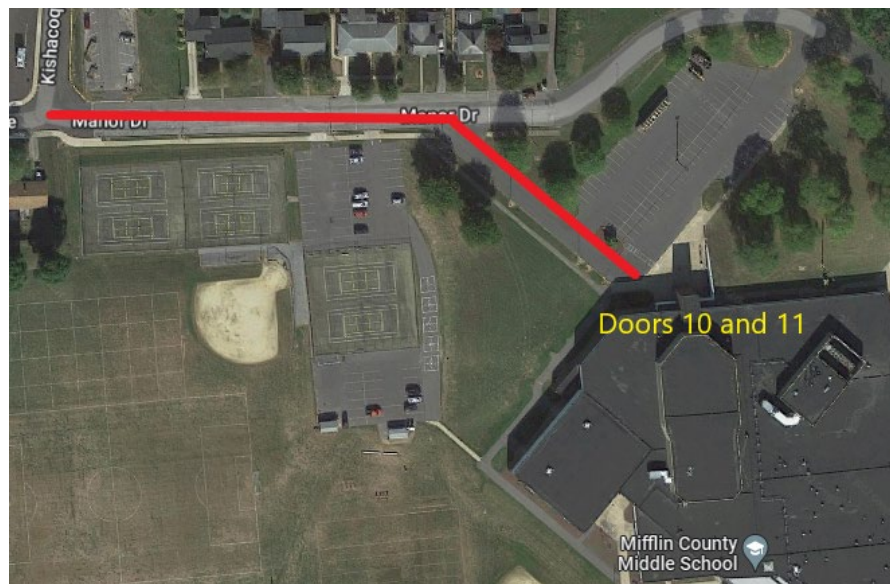
1. Immediate care of the injured or ill athletes(s)
2. Activation of EMS for any life-threatening conditions (loss of consciousness, no breathing, no pulse, severe bleeding, head/neck injury.)
 - a. Call 911 and provide necessary information (name, location of injured athlete, telephone number where call is placed, number of individuals injured, condition of injured athlete(s), treatment already given, specific directions to the venue, any other information requested).
 - i. **EMS access: Follow Kishacoquillas St to Manor Dr and turn left. Turn into second parking lot past the tennis courts. Proceed to Door 12. ATR is located inside Door 12 to the left.**
 - ii. **School Address: 2 Manor Dr Lewistown, PA 17044**
- b. If ambulance is on the scene, the AT will signal the EMT/Paramedics onto the field
- c. A member of the coaching staff or parent is responsible to escort the injured athlete to hospital in the ambulance.
- d. Use cell phones. Land lines are located in the athletic training office at MCMS
3. Emergency Equipment Retrieval
 - a. If emergency equipment is needed the AT will signal to the sideline for additional support.
4. AEDs are located outside the gym by the girls locker room entrance and in the athletic training room.
5. Important Phone Numbers: EMS: 911; FAME EMS: 717-248-5553; MCRPD: 717-248-1400; MCMS Office: 717-242-1401



Mifflin County Middle School Main Gym Emergency Action Plan

In the event of an emergency, follow the steps bellow:

1. Immediate care of the injured or ill athletes(s)
2. Activation of EMS for any life-threatening conditions (loss of consciousness, no breathing, no pulse, severe bleeding, head/neck injury.)
 - a. Call 911 and provide necessary information (name, location of injured athlete, telephone number where call is placed, number of individuals injured, condition of injured athlete(s), treatment already given, specific directions to the venue, any other information requested.
 - i. **EMS access: Follow Kishacoquillas St to Manor Dr and turn left. Turn into second parking lot past the tennis courts. Proceed to Doors 10 and 11. Gym is located inside the doors to the right.**
 - ii. **School Address: 2 Manor Dr Lewistown, PA 17044**
 - b. If ambulance is on the scene, the AT will signal the EMT/Paramedics onto the field
 - c. A member of the coaching staff or parent is responsible to escort the injured athlete to hospital in the ambulance.
 - d. Use cell phones. Land lines are located in the athletic training office at MCMS
3. Emergency Equipment Retrieval
 - a. If emergency equipment is needed the AT will signal to the sideline for additional support.
4. AEDs are located outside the gym by the girls locker room entrance and in the athletic training room.
5. Important Phone Numbers: EMS: 911; FAME EMS: 717-248-5553; MCRPD: 717-248-1400; MCMS Office: 717-242-1401



Mifflin County Middle School Outdoor Fields Field Emergency

Action Plan

In the event of an emergency, follow the steps below:

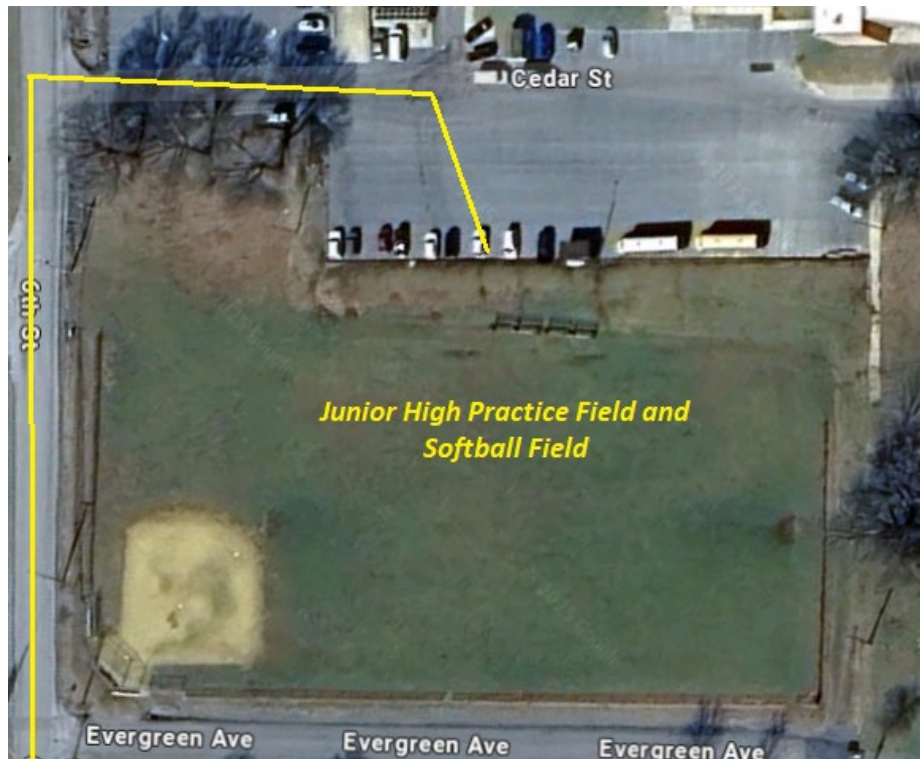
1. Immediate care of the injured or ill athletes(s)
2. Activation of EMS for any life-threatening conditions (loss of consciousness, no breathing, no pulse, severe bleeding, head/neck injury.)
 - a. Call 911 and provide necessary information (name, location of injured athlete, telephone number where call is placed, number of individuals injured, condition of injured athlete(s), treatment already given, specific directions to the venue, any other information requested.
 - i. EMS access: Follow Kishacoquillas St to Manor St and turn left. Can turn into parking lot near tennis courts or drive around MCMS to parking lot on far side of fields depending on where the emergency is.**
 - b. If ambulance is on the scene, the AT will signal the EMT/Paramedics onto the field
 - c. If any gate(s) need to be open the Crowd Management Team will open them to create a transportation route to and from the venue.
 - d. A member of the coaching staff or parent is responsible to escort the injured athlete to hospital in the ambulance.
 - e. Use cell phones. Land lines are located in the main office at MCMS.
3. Emergency Equipment Retrieval
 - a. If emergency equipment is needed the AT will signal to the sideline for additional support.
4. AEDs are located in the MCMS Gym by the girls locker room, outside the Main Office, and with the athletic trainer
5. Lightning Shelter: MCMS
6. Important Phone Numbers: EMS: 911; FAME EMS: 717-248-5553; MCRPD: 717-248-1400; MCMS Office: 717-242-1401



Mifflin County JH Practice Field Emergency Action Plan

In the event of an emergency, follow the steps bellow:

1. Immediate care of the injured or ill athletes(s)
2. Activation of EMS for any life-threatening conditions (loss of consciousness, no breathing, no pulse, severe bleeding, head/neck injury.)
 - a. Call 911 and provide necessary information (name, location of injured athlete, telephone number where call is placed, number of individuals injured, condition of injured athlete(s), treatment already given, specific directions to the venue, any other information requested.
 - i. **EMS access: Follow 6th St then turn right into the first MCJHS Entrance(Cedar St). Field is on the right.**
 - b. If ambulance is on the scene, the AT will signal the EMT/Paramedics onto the field
 - c. If any gate(s) need to be open the Crowd Management Team will open them to create a transportation route to and from the venue.
 - d. A member of the coaching staff or parent is responsible to escort the injured athlete to hospital in the ambulance.
 - e. Use cell phones. Land lines are located in the main office at MCHS and MCJHS
3. Emergency Equipment Retrieval
 - a. If emergency equipment is needed the AT will signal to the sideline for additional support.
4. AEDs are located in outside the MCJHS Gym by the girls locker room entrance, and with the athletic trainer
5. Lightning Shelter: MCJHS
6. Important Phone Numbers: EMS: 911; FAME EMS: 717-248-5553; MCRPD: 717-248-1400; MCJHS Office: 717-248-5441



Mifflin County Tennis Complex Emergency Action Plan

In the event of an emergency, follow the steps bellow:

1. Immediate care of the injured or ill athletes(s)
2. Activation of EMS for any life-threatening conditions (loss of consciousness, no breathing, no pulse, severe bleeding, head/neck injury.)
 - a. Call 911 and provide necessary information (name, location of injured athlete, telephone number where call is placed, number of individuals injured, condition of injured athlete(s), treatment already given, specific directions to the venue, any other information requested.
 - i. **EMS access: Follow 6th St to MCJHS tennis courts on the right**
 - b. If ambulance is on the scene, the AT will signal the EMT/Paramedics onto the field
 - c. If any gate(s) need to be open the Crowd Management Team will open them to create a transportation route to and from the venue.
 - d. A member of the coaching staff or parent is responsible to escort the injured athlete to hospital in the ambulance.
 - e. Use cell phones. Land lines are located in the main office at MCHS and MCJHS
3. Emergency Equipment Retrieval
 - a. If emergency equipment is needed the AT will signal to the sideline for additional support.
4. AEDs are located in outside the MCJHS Gym by the girls locker room entrance, and with the athletic trainer
5. Lightning Shelter: MCJHS
6. Important Phone Numbers: EMS: 911; FAME EMS: 717-248-5553; MCRPD: 717-248-1400; MCHS Office: 717-242-0240; MCJHS Office: 717-248-5441



Lewistown Intermediate School Emergency Action Plan

In the event of an emergency, follow the steps below:

1. Immediate care of the injured or ill athletes(s)
2. Activation of EMS for any life-threatening conditions (loss of consciousness, no breathing, no pulse, severe bleeding, head/neck injury.)
 - a. Call 911 and provide necessary information (name, location of injured athlete, telephone number where call is placed, number of individuals injured, condition of injured athlete(s), treatment already given, specific directions to the venue, any other information requested.
 - i. **EMS access: Turn into parking lot off of Kishacoquillas Street. For practice field, can park directly on Kishacoquillas Street in front of field**
 - ii. **LIS Address: 212 Green Ave, Lewistown, PA 17044**
 - b. If ambulance is on the scene, the AT will signal the EMT/Paramedics onto the field
 - c. If any gate(s) need to be open the Crowd Management Team will open them to create a transportation route to and from the venue.
 - d. A member of the coaching staff or parent is responsible to escort the injured athlete to hospital in the ambulance.
 - e. Use cell phones. Land lines are located in the main office at LIS
3. Emergency Equipment Retrieval
 - a. If emergency equipment is needed the AT will signal to the sideline for additional support.
4. AEDs are located in outside the LIS Gym, and with the athletic trainer
5. Lightning Shelter: LIS
6. Important Phone Numbers: EMS: 911; FAME EMS: 717-248-5553; MCRPD: 717-248-1400;



Indian Valley Elementary Center Emergency Action Plan

In the event of an emergency, follow the steps below:

1. Immediate care of the injured or ill athletes(s)
2. Activation of EMS for any life-threatening conditions (loss of consciousness, no breathing, no pulse, severe bleeding, head/neck injury.)
 - a. Call 911 and provide necessary information (name, location of injured athlete, telephone number where call is placed, number of individuals injured, condition of injured athlete(s), treatment already given, specific directions to the venue, any other information requested.
 - i. **EMS access: Turn into school off of Old US Hwy 322. Proceed to rear of the school for the start and finish line for Cross Country**
 - ii. **IVEC Address: 125 Kish Rd Reedsville, PA 17084**
 - b. If ambulance is on the scene, the AT will signal the EMT/Paramedics onto the field
 - c. If any gate(s) need to be open the Crowd Management Team will open them to create a transportation route to and from the venue.
 - d. A member of the coaching staff or parent is responsible to escort the injured athlete to hospital in the ambulance.
 - e. Use cell phones. Land lines are located in the main office at IVEC
3. Emergency Equipment Retrieval
 - a. If emergency equipment is needed the AT will signal to the sideline for additional support.
4. AEDs are located in the cafeteria at IVEC, in the Cross Country med kit, and with the athletic trainer
5. Lightning Shelter: IVEC
6. Important Phone Numbers: EMS: 911; FAME EMS: 717-248-5553; MCRPD: 717-248-1400;

